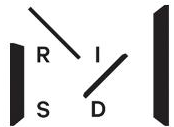


RISD MUSEUM

Virtual Visit:

Paul Scott, *New American Scenery*, 2019



RISD MUSEUM

The image shows a gallery space with dark wood-paneled walls and a wooden floor. Several display cases are arranged throughout the room, showcasing a collection of blue and white porcelain plates. The plates feature various designs, including landscapes and figures. A large, ornate chandelier hangs from the ceiling, and an arched alcove in the wall also displays plates. In the background, a doorway leads to another room with a table and chairs.



Landscape near Cove, Arizona
Photograph by Paul Scott

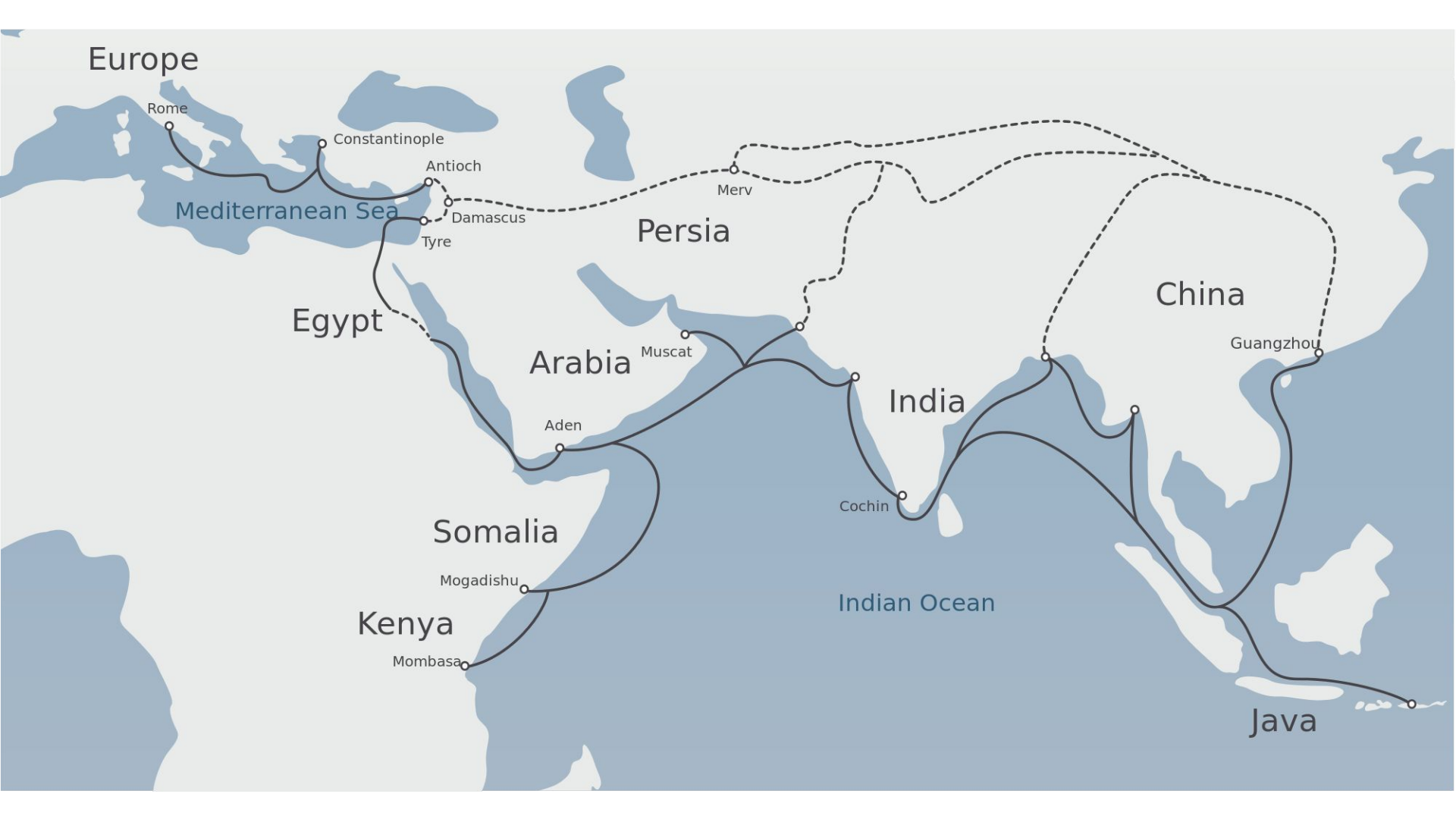


Thomas Cole
Landscape (Landscape with Tree Trunks), 1828



Paul Scott





Europe

Rome

Constantinople

Antioch

Mediterranean Sea

Damascus

Tyre

Persia

Merv

China

Egypt

Arabia

Muscat

India

Guangzhou

Aden

Cochin

Somalia

Mogadishu

Kenya

Mombasa

Indian Ocean

Java

Transferware



William Guy Wall, designer
New York from Brooklyn Heights
Plate, ca. 1825



Joseph Stubbs
Boston State House
ca. 1827



Photos courtesy of Paul Scott





Paul Scott
Souvenir of Shiprock
2019



Photograph by Paul Scott

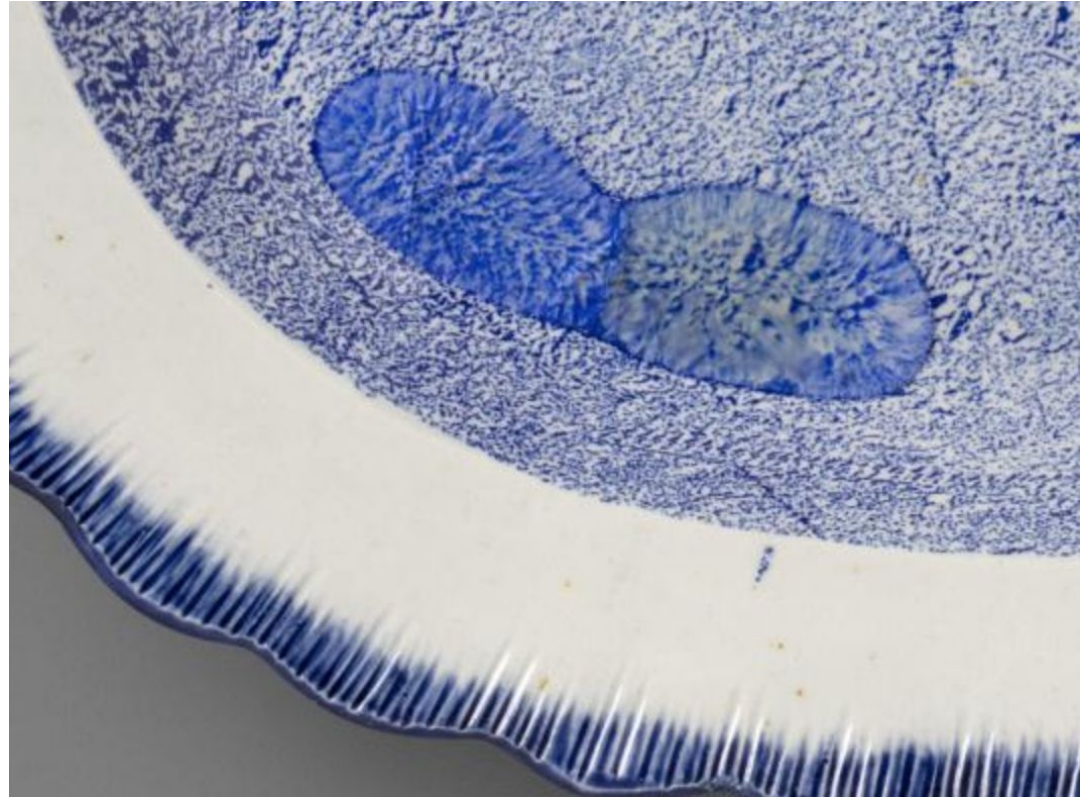


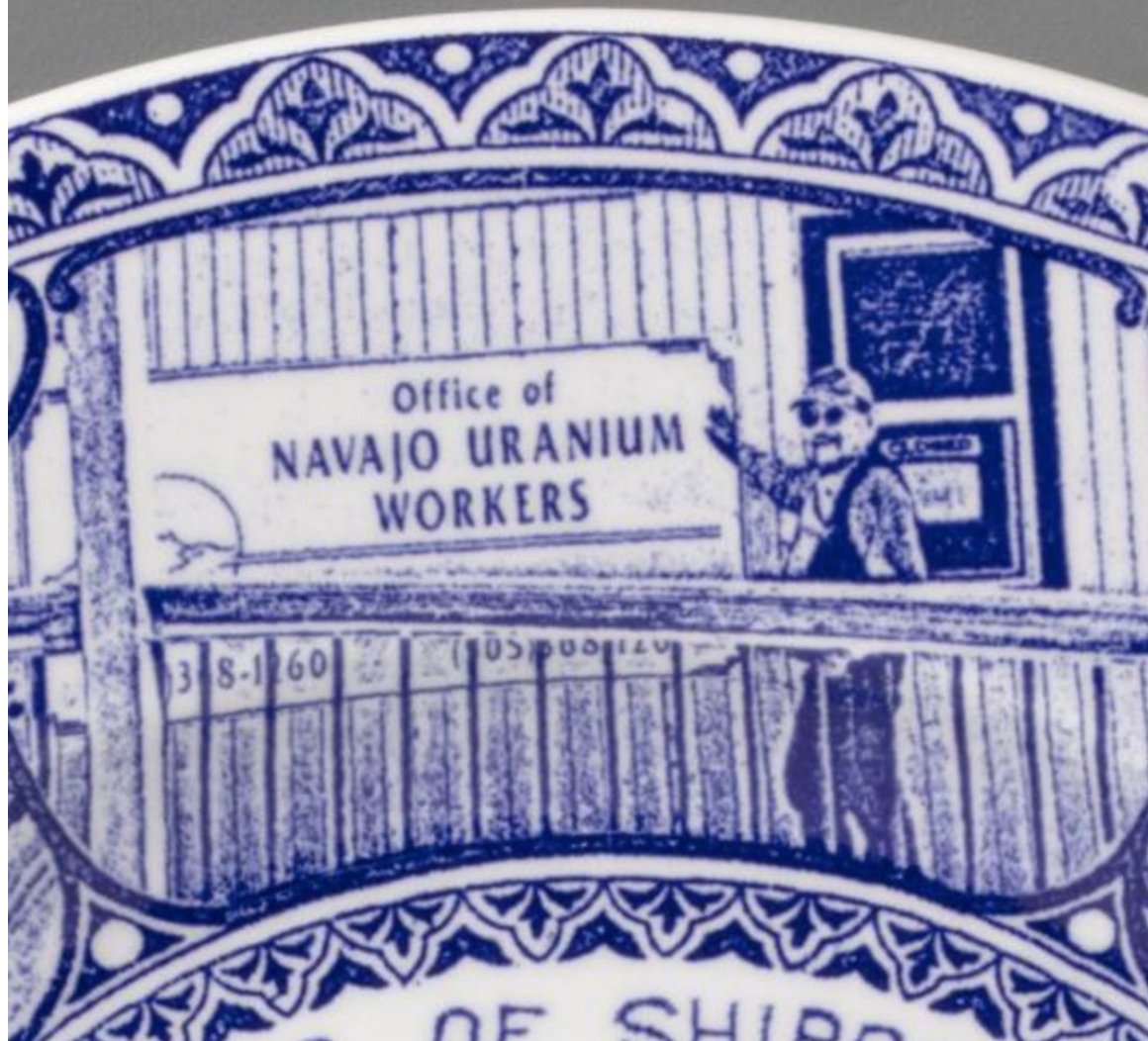
Paul Scott
The Uranium Series No 1
Mesa No: 1 Mine Road,
Cove, Az., 2019



Used for bombs and nuclear power stations, uranium also has a history as a colorant for glass and ceramics...I've used fragments of uranium glass, fired on top of the glazed print. The "beautiful" pictorial landscapes, like the real places they depict, also contain the deadly ore.

— Paul Scott









Paul Scott,
Flint, near Detroit, 2019

> Research and reflect

What issues related to environmental health and safety exist in your town or city?

An example of an environmental health issue in my town is...

Are there efforts to solve or lessen the impacts of that issue? If so, what are they? If not, what ideas do you have?

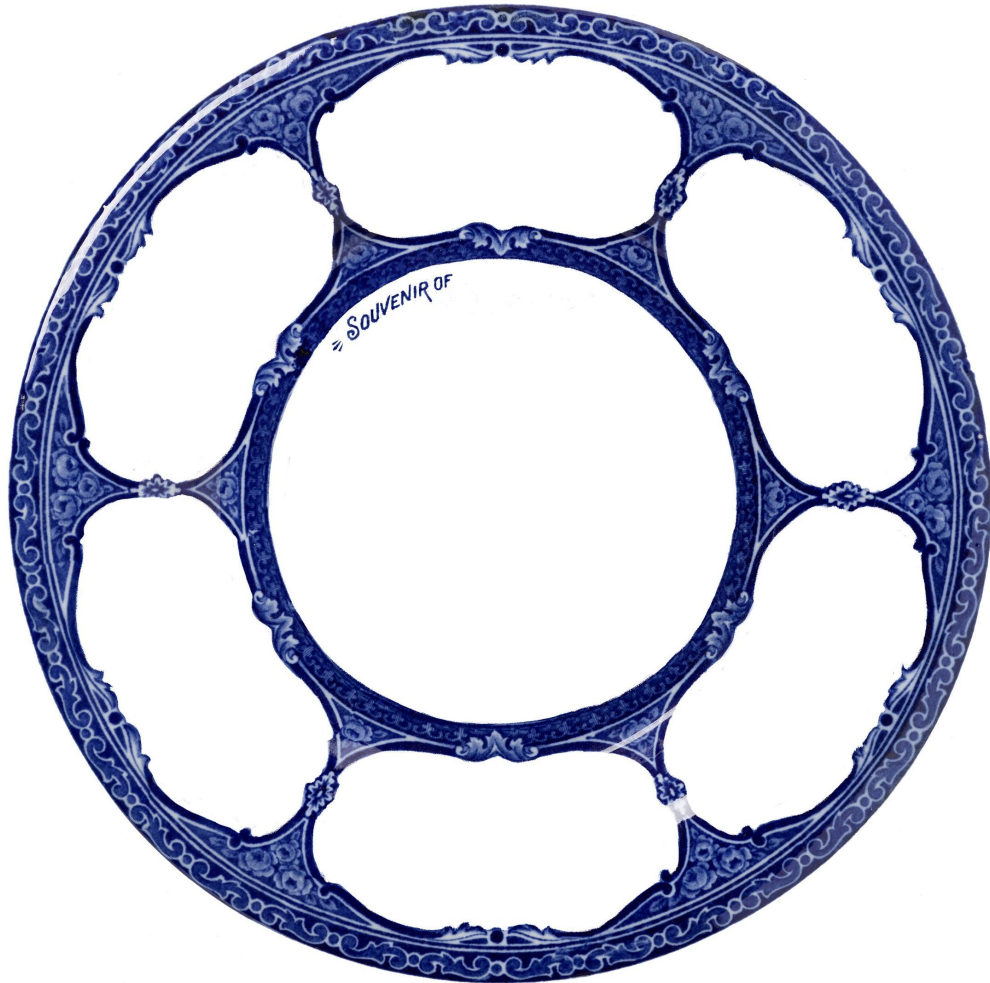
One thing people are doing/could do about that issue is...



➤ **Imagine we are 100 years in the future.** In this future, people have worked hard to improve the health of all people and the environment.

Design a souvenir plate for your town or city. Draw a few specific scenes that show what a healthy future could look like in those places.





- > **Design a souvenir plate for your town or city.** Draw a few specific scenes that show what a healthy future could look like in those places.

We would love to hear from you!

Your teacher or you can share your work with us at teachers@risd.edu.

Tag us in your art & design-inspired projects with:

#RISDMuseum #museumfromhome #TeachingwithArt

More activities + resources on risdmuseum.org

—Teaching Notes: [Imagining the Americas](#)



Credits

Installation views of Lucy Truman Aldrich Porcelain Gallery at the RISD Museum, 2019.

Landscape near Cove, AZ. Photograph by Paul Scott.

Thomas Cole, *Landscape (Landscape with Tree Trunks)*, 1828. Walter H. Kimball Fund.

Silk Road. Image by Belsky. Wikimedia Commons.

William Guy Wall, *New York from Brooklyn Heights Plate*, ca. 1825. Gift of Mrs. L. Earle Rowe in memory of L. Earle Rowe.

Joseph Stubbs, *Boston State House*, ca. 1827. Gift of Edward B. Aldrich in memory of Lora E. Aldrich.

Photographs of process courtesy of Paul Scott.

Work in Process / Andrew Raftery on Creating a Ceramic Decal for Transferware: <https://vimeo.com/198099794>

Bottle Kiln. Photograph by Martyn Davies.

Paul Scott, New American Scenery, Raid the Icebox digital publication

<http://publications.risdmuseum.org/raid-icebox-now/paul-scott-new-american-scenery>

Paul Scott, *Souvenir of Shiprock*, 2019, salvaged Syracuse China with pearlware glaze, in-glaze screenprint decal, and uranium glass. Courtesy of Alturas Foundation, San Antonio, TX TL125.2019.34. Photograph © John Polak.

Process photograph by Paul Scott for *The Uranium Series No 1 Mesa No: 1 Mine Road, Cove, Az.*, 2019.

Paul Scott, *The Uranium Series No 1 Mesa No: 1 Mine Road, Cove, Az.*, 2019, pearlware shell-edge platter (ca. 1840) with in-glaze screenprint decal and uranium glass. Courtesy of Alturas Foundation, San Antonio, TX TL125.2019.16. Photograph © John Polak.

Paul Scott, *Flint, near Detroit*, 2019, salvaged Syracuse China plate with pearlware glaze, in-glaze screenprint decal, and melted lead. Courtesy of Alturas Foundation, San Antonio, TX TL125.2019.30. Photograph © John Polak.

Rowland and Marsellus, *Transferware Plate with Scenes of Providence*, 1894. Gift of William A. Viall III in memory of Gretchen Viall.

Souvenir plate example and template by MJ Robinson.